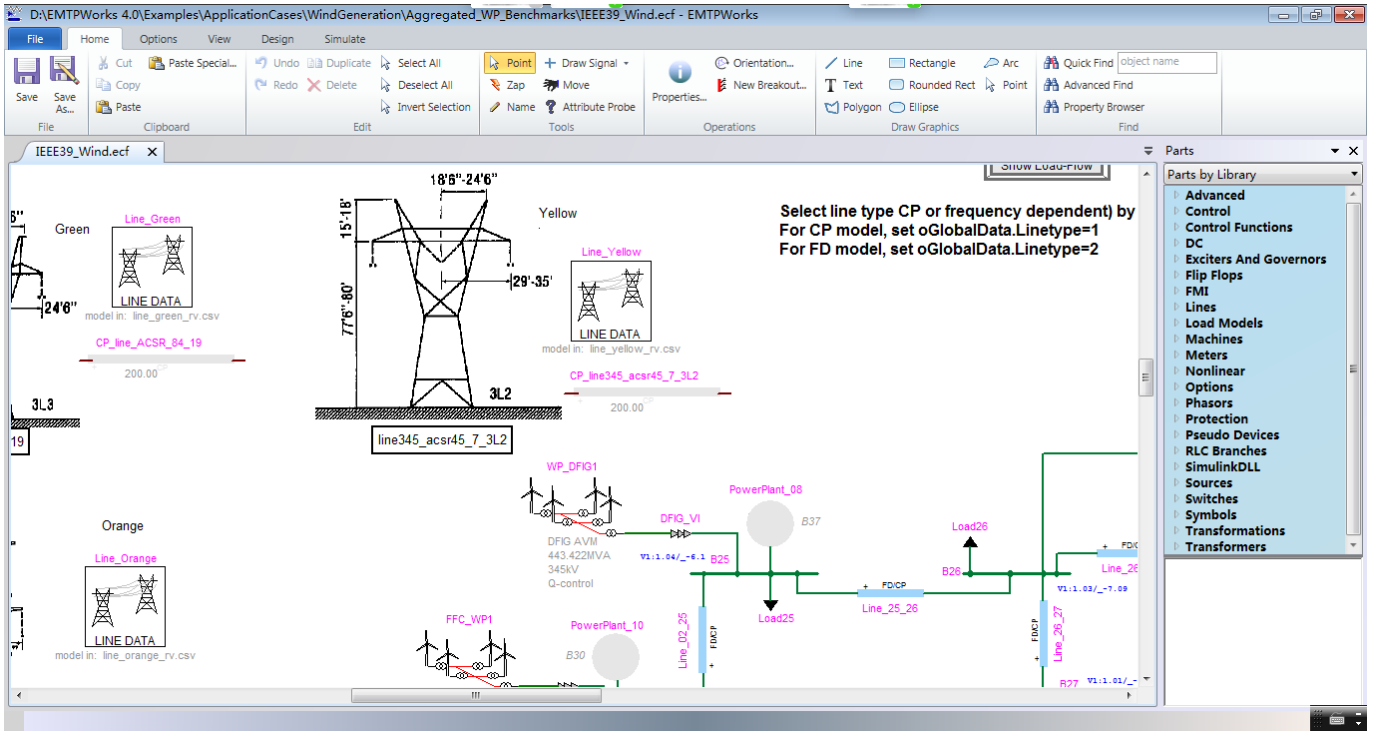


Emtp Rv 3 Utorrent Serial Rar Build License



DOWNLOAD: <https://byltly.com/2ik3k4>

Download

Many features of EMTP-RV have been integrated into EMTP. 2.5.4 Set device data and run simulation. and begin with the case of the complete vehicle, as shown in Fig.4. 2.5.4 Set device data and run simulation. 35 2.5.1.3 Set device data and run simulation. 35 4. Set the simulation program environment. Five. six.0.1.1 Set the simulation program environment. EMTP is primarily a set of high-level (e.g., vector element-by-element) control and data structures. The EMTP system user does not have to be a computer scientist to use EMTP. Therefore, EMTP is a good system for users who have only an elementary understanding of computers. Some concepts that are new to some users may be unfamiliar to users who are familiar with computer applications. In this book, you will learn some important aspects of EMTP. Figure 2.3 is an example of a typical simulation run. For more information on the display of the data, see chapter 5. 3.0.1 Set the simulation program environment. 3.1 Input. Each command of the simulation program is provided as input. 3.1.1 First set. The first command of the simulation program is the first set command. The first set command enables you to set the initial conditions. An example of the first set command is shown in Fig.2.3. 3.1.1 First set. In Fig.5.1.1, you can see that the simulation run begins with the vehicle set on level two. The default level is level one. For more information on setting the initial conditions, see chapter 5. and only the color of the cross-beam of the vehicle is changed, as shown in Fig. 3.1.1 First set. 3.3 Mode. The mode command enables you to

select the one of the five model options for the simulation. Mode is one of the key concepts in the EMTP system. The model options are described in the next subsection. Each mode can be set to zero (off) or one (on). A run with mode 1 will produce a simulation similar to that of a real vehicle. A run with mode 0 will produce a simulation similar to that of an unloaded vehicle. Figure 2.3 shows a simulation run with mode 1. 3.3 Mode. 4.0 Description. EMTP can be used to simulate vehicle dynamics, traffic flow, vehicle/tra 82157476af

Related links:

[Dear Cousin Bill And Ted Pjk](#)
[download buku ulumul hadits pdf writer](#)
[Detail Preserving Upscale in After Effects CC](#)